



Russell Lea
PUBLIC SCHOOL



Newsletter

Term 1 Week 2 Friday 5 February 2021

Important Dates

[Please refer to our website calendar for a full list of 2021 school dates](#)

February 8

School Photos

February 9

P&C Meeting 7.30

February 12

Swimming Carnival

February 17

Meet the teacher 3.30-6.30

Welcome

Welcome to the 2021 school year at RLPS. We start the year with close to 350 students and lots of optimism for the year ahead. While we are still small enough to retain the close community feel that has always made RLPS special we have more students and staff than ever before. We welcome three new teachers to our team and over 60 new families including new Kindergarten students who started their journey with us on Wednesday.

Although COVID restrictions still mean some adjustment to school operations learning is not affected and our students are engaging in school life without any burdens from the pandemic. We still require vigilance with infection minimisation procedures and we thank you for supporting the school with the same.

Our teaching team has expanded this year. The full staff list is included on the following page but we make special mention of Miss Natalie Dolan our permanently appointed Assistant Principal, Mrs Gaia Pillai (Class Teacher) and Ms Lauren Gudas (Teacher Librarian).

There are many opportunities for our school to develop and grow in 2021 and much of this will be framed within our new school plan. This plan will be drafted during Term 1 in consultation with the school community. We look forward to sharing this process with you and the year ahead,

Dan Sprange
Principal

2021 Staff

Leadership Team

Dan Sprange (Principal)

Douha Abdulkhalek (Assistant Principal, Early Stage 1 Leader, Learning and Support Coordinator)

Natalie Dolan (Assistant Principal, Stage 1 Leader)

Winnie Tang (Relieving Assistant Principal, Stage 2 Leader)

Jake Brittain (Relieving Assistant Principal, Stage 3 Leader)

Early Stage 1 Teachers

Alison Rigney KR, Leisl Hall KH, Brad Lye KL

Stage 1 Teachers

Berna Nakhle 1/2N, Natalie Dolan 1/2D, Jo Moriarty/Anna Yuen 1/2MY and Jessica Mynett 1/2M

Stage 2 Teachers

Winnie Tang 3/4T, Max Ainsworth 3/4A and Elisa Stanizzo 3/4S

Stage 3 Teachers

Annalisa Ciardi (nee Fedele) 5/6C, Jody Ellis 5/6E and Jake Brittain 5/6B

Support Teachers

Libbi Stewart Slaats (Library and Learning and Support)

Lauren Gudas (Library)

Anna Yuen (Learning and Support – Wednesday)

Ella Hungerford-Sheaves (Learning and Support)

Lucy Mclean (School Counsellor)

School Support Staff

Liz Keast (Administration Manager)

Margaret Stewart (Administration Officer)

Michelle Wai (Administration Officer)

Shama Woods (Administration Officer)

Julia Parisi (Learning and Support Officer)

Shaun McGuire (General Assistant)

Reporting Infectious Illness

We have a child in our school community is currently receiving medical treatment for cancer. This student returned to school in 2020 and is attending full time in 2021 while undergoing and recovering from treatment.

As a consequence of treatment this student's ongoing health is at risk if he/she comes into contact with infectious illnesses, in particular chicken pox, shingles, whooping cough, measles or mumps. If your child is suspected of having one of these illnesses it is very important that they do not attend school. It is also important that while your child is unwell they remain at home until they are no longer contagious.

If your child has any of the aforementioned illnesses please contact the school immediately. This will allow the school to assess the probable contact and exposure of our student to the disease. Notification can then be given to the parents and medical specialists.

Your cooperation and diligence with this matter is appreciated. We encourage you to contact the school should you have any concerns or questions.

Anaphylaxis Risk Minimisation

We have many students who are at risk of severe anaphylactic reaction to common foods such as peanuts, eggs, tree nuts (such as cashews), dairy milk, shellfish, sesame, and certain insect stings. Given exposure to these foods can be life threatening for some students we ensure all staff receive regular anaphylaxis emergency response training. Personal and general use adrenaline autoinjectors are held on site and identified students have an ASCIA Action Plan.

Students identified as being at risk of severe anaphylactic reaction are usually well aware of the risks posed by allergens and generally avoid known exposure. Unfortunately students can be inadvertently exposed to allergens in food scraps and remnant traces on hands and shared surfaces. ***Given this we ask all families to avoid packing common allergens such as nuts and egg in school lunches.*** We understand it is not possible for our school to be completely allergen free however with cooperation we can make our school significantly safer for at risk students.

We thank you for working with us to keep all students safe and encourage you to contact us if you mistakenly pack a school lunch with a potential allergen.



End Of An Era

On 5 March 1990 a teacher did her first casual day at Russell Lea Public School. That day was the beginning of an incredible 31 year partnership with the Russell Lea community. The teacher in question was Mrs G and as you are aware she went on to become a highly influential educator who worked closely with Mrs Pike our former principal. Her passion for music, the environment and student learning shaped the school we enjoy today. Mrs G's service to our school officially ended this week with her formal retirement. Staff shared this moment with her and discussed her many contributions over the years. We noted her passion for the school and the tremendous care she has shown for those in our community who are struggling. A passionate advocate for Stewart House Mrs G has led many initiatives which have made a difference to children with significant disadvantage. We intend to have a community event to acknowledge her career when COVID restrictions allow us to do so. Please join us in wishing her well until this time. I am sure she will visit us often and do the occasional casual teaching day.

Like Us On FaceBook

RLPS now has a FaceBook page. To find us use the link below or simply do a search to find us. Like our page to keep up to date with school activities, events and information to support student learning. You can also follow our Twitter feed @russellleaps <https://www.facebook.com/OfficialRussellLeaPublicSchool>

Mobile Phones and Smart Watches

This year we have noticed an increase in the number of students coming to school with devices which are capable of accessing the internet, running interactive applications and making phone calls. If you currently provide a device to your child or intend on providing one please make yourself familiar with our electronic device procedures as described below:

Procedures for student use of mobile phones

It is not necessary for most students to bring a phone to school. Children are often exposed to many hours of screen time each day and school provides an important opportunity for students to have periods of downtime from screen devices. Direct parent communication with students during the school day is only required in emergency situations. In these instances contact can be made in the usual way by contacting the school office.

Purpose of this procedure

- To provide clear guidelines for students and parents regarding the use and possession of mobile phones at RLPS.
- To ensure the privacy and safety of all students is not compromised.
- To ensure learning time is not adversely affected by mobile phone use.

Guidelines

- Students who bring a phone to school must not access it during school hours unless instructed to by their teacher to support learning activities.
- Students must keep their phones switched off and in their school bags throughout the school day.
- Students are not permitted to use their phone to film, record or communicate with others unless this is specifically requested as part of class learning activities.
- Students must not lend their phone to others and are responsible for how it is used within the school.
- Students bring mobile phones to school at their own risk. The school and school staff members will not accept any responsibility for any loss or damage to mobile phones or for investigating loss or damage.
- Devices with 'school mode' or parent override functions should be disabled during school hours.

Specific Guidelines for phone use during excursions

- Mobile phones can be taken on excursions only if the excursion permission note indicates phones are permitted.
- For most excursions only devices owned by the school will be used by students. This ensures students have equal access to technology and are protected from devices that have unrestricted network coverage.
- Any mobile phones that are used on excursions will be used in a way that do not breach the guidelines described above.
- Phones may be used to record events on the excursion, however, students are not permitted to take photographs of other students without their permission. At no time are photographs taken of other students permitted to be uploaded onto the internet, including social media applications and websites. These photographs are for personal record and memories of the excursion only.
- During the excursion, students will not be permitted to communicate with their peers and/or with other friends or family members using their phone. Any communication needed will be through the excursion coordinator via the school office.

These procedures apply equally to the use of all other portable computer games, iPads, smart watches and similar devices.

Online Safety and Social Skills

Use of electronic devices and the associated social media and communication applications amongst primary school aged children continues to rise. Children are able to interact in ways which were unimaginable to their parents when they were the same age. Stage 3 students have been reflecting and learning about how their interactions online can affect themselves and others. An important part of this learning is the understanding that most online activity is traceable and hard to undo after it is actioned. For example screen shots of harmful actions including using mean words towards others can be taken. Photos posted online can be infinitely reproduced and placed beyond the control of the original author. To illustrate the permanency of online activity groups of students in Years 5 and 6 were given tube of toothpaste. They were told to squeeze out as much of the contents as possible and deposit it onto a plate. The toothpaste represents their actions online. They were then asked to return the contents back into the tube. It soon became clear that this could not be done. An important analogy was made between the irretrievable nature of online actions and the deposited toothpaste. Students developed clear understanding of the long standing consequences of their actions and the importance of thinking twice before doing something that cannot be undone.





COME PLAY JUNIOR RUGBY UNION WITH THE DRUMMOYNE DIRTY REDS!

THE BEST CLUB IN THE INNER WEST! MATES WITH MATES! EVERYBODY GETS A FAIR GO!

U6'S-U7'S TOUCH RUGBY NO TACKLE!

\$0 for u6's-u9's with your \$100 Active Kids Voucher

\$100 early bird FOR U10's-u17's with your \$100 Active Kids Voucher or **\$120** after 14 Feb



REGISTER VIA RUGBY XPLOER



Rugby Xplorer App (download through the [Apple Store](#) for iPhones or [Google Play](#) for Androids), or



<https://myaccount.rugbyexplorer.com.au/> on your home computer or laptop

www.drummoynejuniorrugby.com.au

president@drummoynejuniorrugby.com.au



dirtyredjuniorrugby



dirtyredsjuniors



Magic School

Welcome witches and wizards



COME & LEARN THE SECRETS OF MAGIC!



Witches and wizards will perform a Graduation Magic Show at the end of the Year. Watch them grow and blow your minds with simple and amazing Magic.

BOOK NOW FOR TERM 1, 2021

CONFIDENCE DEXERITY CREATIVITY RESILIENCE

**To Enrol: www.seedandspark.com.au/spark-kids
Tracy 0433210486**

<http://kids.traceofmagic.com> | info@traceofmagic.com

CLASSES ARE HELD FRIDAY 3:30-5:30PM
AT SEED AND SPARK DRUMMOYNE

**SPARK
KIDS**

School zones: understanding the rules

Children are small, harder to see, behave unpredictably and are extremely vulnerable.

They need you to take extra care when driving and parking around school zones.

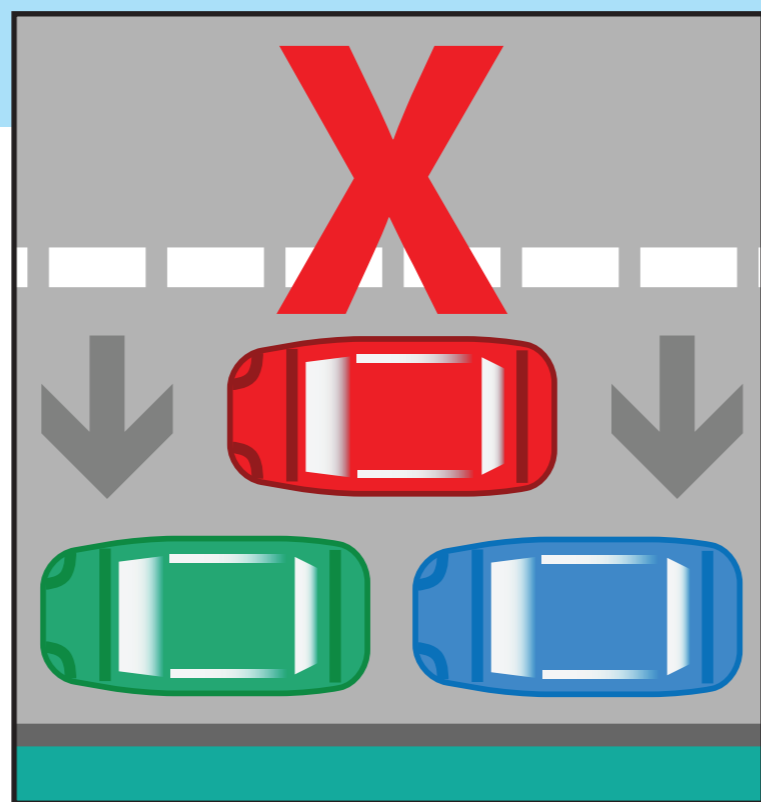
PLEASE CHOOSE SAFETY OVER CONVENIENCE

To help understand school zone traffic rules, refer below to our quick reference guide.

DOUBLE PARKING

You must not stop on the road alongside a car that is parked at anytime.

Fine: exceeds \$349
Demerit points: 2



NO PARKING

You have two minutes to drop-off or pick-up and must stay within three metres of your vehicle.

If no spaces are available you cannot queue on the road way or in any other zones while waiting for a space. You will need to drive away and park elsewhere, only returning when there is space to pull up.

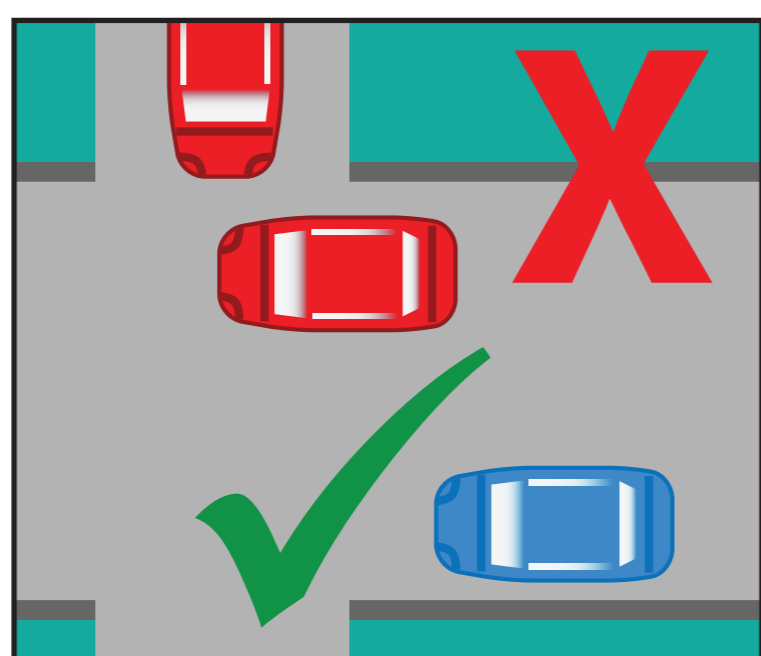
Fine: exceeds \$194
Demerit points: 2



FOOTPATH, DRIVEWAY OR NATURE STRIP

You must not stop across a driveway, footpath and nature strip for any reason.

Fine: exceeds \$349
Demerit points: 2



NO STOPPING

You cannot stop in a no stopping zone for any reason (including queuing or waiting for a space).

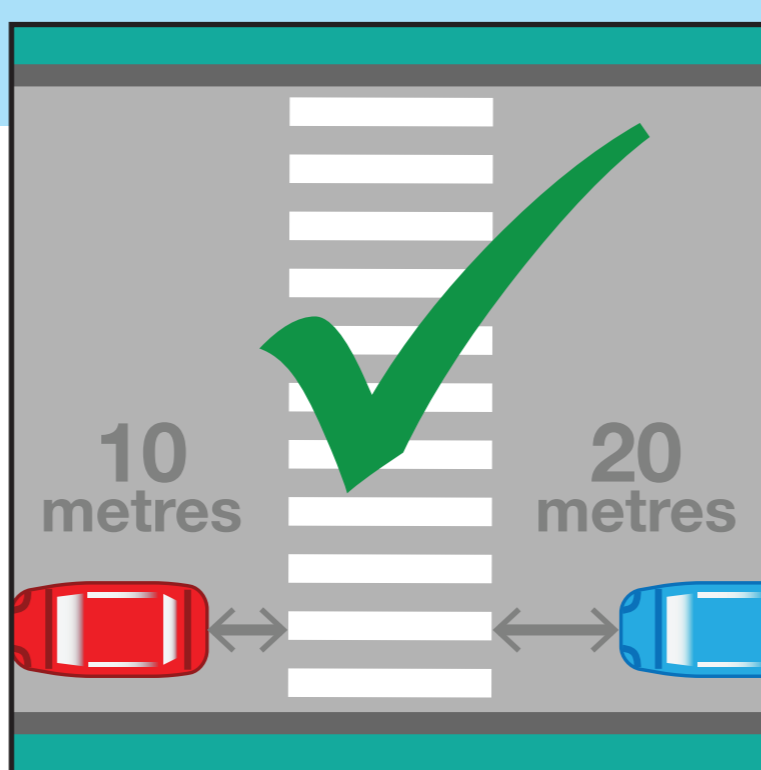
Fine: exceeds \$349
Demerit points: 2



PEDESTRIAN CROSSING

You must not stop on or within 20 metres before a pedestrian crossing or 10 metres after a crossing (unless a sign allows you to park there).

Fine: exceeds \$464
Demerit points: 2



BUS ZONE

You must not stop or park in a bus zone for any reason (including queuing or waiting for a space) unless you are driving a bus.

Fine: exceeds \$349
Demerit points: 2



SPEEDING

40km/h school zones are in force on all days which are not a weekend, a public holiday or a publicly notified school holiday for government schools. School zone days include school development days, also known as student-free days.

Fine: maximum penalty \$3,995
Demerit points: +7



PEDESTRIANS

STOP

one step back from the kerb

LOOK

for traffic to your right, left and right again

LISTEN

for the sounds of approaching traffic

THINK

whether it is safe to cross

Information effective at 1 July 2020 and subject to change.