



*Russell Lea*  
PUBLIC SCHOOL



Newsletter

Term 1, Week 1 Friday 7 February 2020

## Important Dates

Please refer to our website calendar for a full list of 2020 school dates.

February 18

Special Religious Education and Ethics commences

February 19

Meet the teacher 3.30-5.30

March 9

Anaphylaxis Presentation K-4

## Welcome

Welcome to the 2020 school year at RLPS. We start the year with over 300 students, two new class teachers and our newly completed teaching and learning facilities. On Monday over 70 new students and their families became part of the RLPS community. We extend a special welcome to these families and wish them well for the years ahead.

As a school we are thinking of the challenges faced by many school communities across the country as they deal with the consequences of a horrific fire season. Some of our families faced their own struggles as they were caught up in evacuations along the South Coast. These circumstances have given many of us a sense of gratitude for the safe and secure homes and school we enjoy.

Our teaching team has expanded this year. The full staff list is included on the following page but we make special mention of our two newly appointed teachers. We welcome Jessica Mynett from Beauty Point PS and are very relieved that our highly regarded Annalisa Fedele has accepted permanent employment at RLPS. Brad Lye has also joined us as a full time teacher this year after a successful year supporting our school on a casual basis in 2019.

In 2019 our school developed in many positive ways during a busy construction schedule. In 2020 we are looking forward to improving what we do even further without the distractions of the massive physical re-development. Our school planning processes will examine the key projects which will drive ongoing improvement and define the strategies to achieve them.

On behalf of the RLPS team I thank you for choosing RLPS and look forward to working with you and your family in 2020.

Dan Sprange  
Principal

## Coronavirus

As you would be aware Australian and NSW Health Authorities have instructed schools to advise staff and students to avoid school for a period of 14 days if they have been in China recently or in contact with someone with a confirmed case of Coronavirus. RLPS has followed this advice and ensured staff and students are adhering to these recommendations. In circumstances such as these it is common for the community to have their own views on how to stay safe. As a government school we follow recommendations of the Australian Chief Medical Officer and only adjust our actions when this advice changes. It is important for students to understand any children who have followed the quarantine procedure and have returned to school following this are not considered a health risk. It would be easy for students to associate Coronavirus with students who have a Chinese background. Given this it is important for parents and teachers to ensure such discrimination does not occur and to have appropriate discussions with children who may be confused or scared by opinions about the virus. If you require more information regarding Coronavirus and NSW Public Schools please refer to the detailed advice provided below or contact the school.

## 2020 Staff

### Leadership Team

Dan Sprange (Principal)

Douha Abdulkhalek (Assistant Principal, Stage 1 Leader, Learning and Support Coordinator)

Glen Grunfelder (Assistant Principal Monday to Tuesday, Early Stage 1 Leader)

Winnie Tang (Relieving Assistant Principal, Stage 2 Leader)

Jake Brittain (Relieving Assistant Principal (Wednesday to Friday, Stage 3 Leader)

### Early Stage 1 Teachers

Alison Rigney KR (Lead Teacher), Leisl Hall KH, Raizza Aguisanda KA and Brad Lye KL

### Stage 1 Teachers

Annalisa Fedele 1/2F, Jody Ellis 1/2E, Jo Moriarty/Anna Yuen 1/2MY and Jessica Mynett 1/2M

### Stage 2 Teachers

Winnie Tang 3/4T, Max Ainsworth 3/4A and Elisa Stanizzo 3/4S

### Stage 3 Teachers

Berna Nakhle 5/6N and Jake Brittain 5/6B

### Support Teachers

Libbi Stewart Slaats (Library and Learning and Support)

Anna Yuen (Learning and Support – Wednesday)

Lucy Mclean (School Counsellor)

### School Administration

Liz Keast (Administration Manager)

Margaret Stewart (Administration Officer)

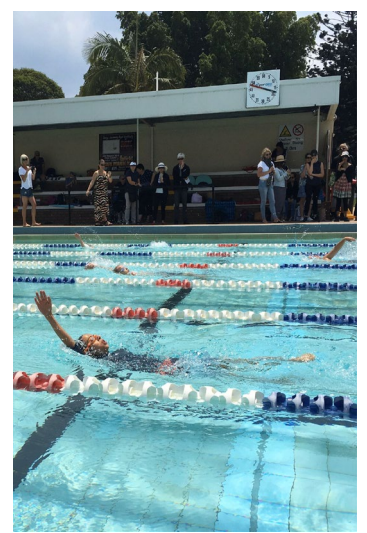
Michelle Wai (Administration Assistant)

Shaun McGuire (General Assistant)



## Swimming Carnival

The Swimming Carnival is always a good way to start the school year and our students enjoyed the experience again this week. The event was very well organised and run with the generous support of many parents especially Debbie Bell and Adam Lewis who provided swimmer support throughout the day. RLPS has a large number of very capable swimmers who train hard and love competing. Thanks to the work of RLPS parent Ian Allan we were able to compare race times to the RLPS records on the day and acknowledge a number of record breaking swims. Thank you to the organising teachers, Ms Fedele, Mr Ainsworth, Ms Moriarty and Mr Brittain.



## Scripture and Ethics Classes

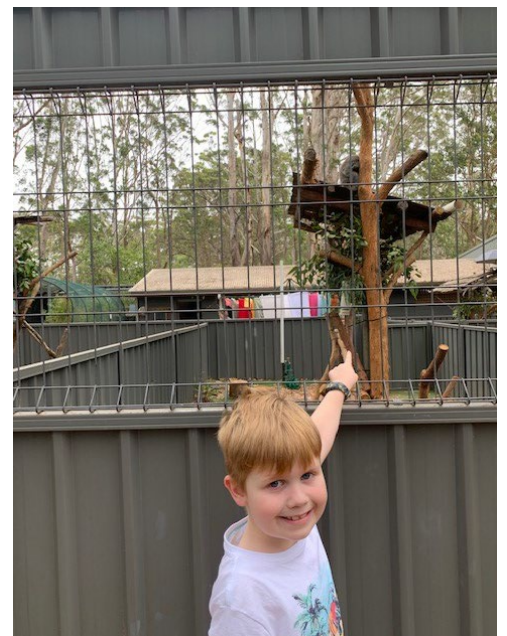
SRE and Ethics classes will commence in Week 4 on Tuesday 18 February. Students are allocated to classes based on historical preferences. If you have changed your preference please inform the school as soon as possible.

## Absence notifications

All student absences require an explanation or an exemption including partial absences such as when a student arrives at school late. The school is required to follow up these absences to ensure an explanation is given. To assist in this process we will be sending automated messages via email and phone text to prompt parents to inform the school the reason for absence. If you receive one of these notification please respond by emailing or calling the school.



# RLPS Koalas



Thanks to some excellent student leadership in 2019 RLPS responded to the bushfire crisis and the plight of Koalas by adopting four Koalas at the Port Macquarie Animal Hospital. Two RLPS students Charlotte and James stopped in to see the Koalas on their way north at Christmas time. Our koalas are doing well and one of them recovered enough to return to the wild. Well done RLPS and thank you for sharing your experiences James and Charlotte.



## Student Supervision

RLPS staff supervise students before school from 9am and until the school bell goes at 3.25pm. Students attending school outside these hours are not able to be supervised. If you are unable to provide supervision outside of the prescribed hours please make alternative arrangements or contact the school to discuss your circumstances.

## Gold (Again)

Lily continues to walk her way into first place in athletics events. Last Sunday she qualified for the NSW State Championship Racewalk at Sydney Olympic Park after winning the 1.1km event for our local region. Well done Lily. We wish you strong legs and a personal best performance next month.



## Road Safety and Parking

Our school is becoming a busier place with approximately 60 new families now travelling to and from school each day. This means there is some increased traffic and demand for parking. If you are travelling to school please respect all parking restrictions and the needs of our neighbours including their driveways and thoroughfares. The bus bay at the front of the school is pick up and drop off zone before and after school. Please do not park in this location for more than 2 minutes or leave your vehicle unattended. Parking is most often available in Barnstaple Road a short walk away.

### Whole School Assembly

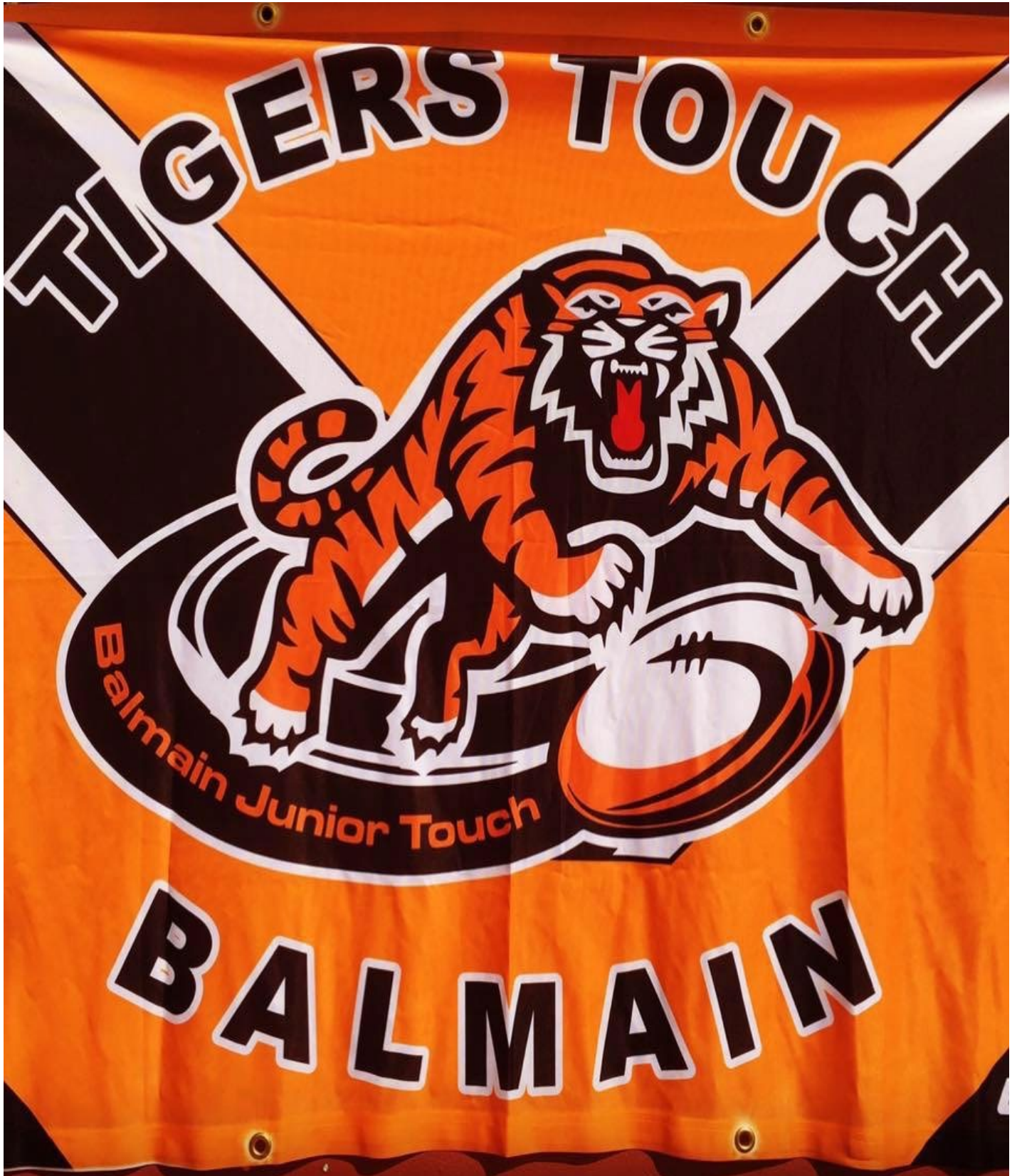
Every even week students will participate in a whole school assembly on a Thursday afternoon from 2.45. The purpose of this assembly is to celebrate student success, develop unity, share classroom learning and engage parents. Each class has an opportunity to run the assembly and share something from learning programs. Parents are invited to attend, especially when their child's class is presenting. The schedule is provided below and we look forward to sharing this time with you.

<b>Term</b>	<b>Week</b>	<b>Class Hosting</b>	<b>Secret Teacher</b>
1	2	5/6B	Winy
	4	5/6N	Elisa
	6	3/4T	Berna
	8	Parent Interviews	
2	2	3/4A	Leisl
	4	3/4S	Alison
	6	1/2F	Brad
	8	1/2M	Anna
3	2	1/2MY	Annalisa
	4	1/2E	Raizza
	6	KA	Max
	8	KL	Jody
4	2	KR	Jessica
	4	KH	Jake
	6	TBA	TBA
	8	Presentation Day	



### Support Our Touch Football

This Sunday four RLPS students will participate in the METS Touch Footy Gala at Timbrell Park. Oscar and Jude Wilson in the U8 boys team and Sorcha and Lily in the U10 girls team. This is the last gala day before the teams head to Wagga Wagga on 20 February to compete in the NSW Junior State Cup. If you feel like supporting them come down to Timbrell Park from 8am on Sunday 9 February to see all the action and cheer them on. The BBQ will be fired up so grab a sausage sizzle breakfast while you are there.



# Primary ETHICS

**Do you know someone who is looking for a fulfilling challenge?**

Primary Ethics supports children to develop the skills they need to voice their opinions, consider the ideas of others and make decisions based on evidence and reasoning, rather than habit or peer pressure.

This year we had enough volunteers to offer the program across the school.

**Without more volunteers, many children will miss out on this opportunity next year.**

Next year we do not have enough volunteers, which means some children will miss out. To continue to offer this program school-wide, we need more volunteers!

**Do you know someone who might be interested in teaching Primary Ethics?**

Full training is provided, including facilitation skills and behaviour management. The entire curriculum is supplied, including detailed lesson plans and notes for every lesson, as well as ongoing support. Teaching experience is not required – Primary Ethics teachers come from all walks of life, and all ages – parents, grandparents, people from our local community.

It is extremely rewarding, and Primary Ethics teachers get to be an integral part of our school and our children's development.

Classes run on Tuesday mornings 9.30-10am

**If you know of someone who might be interested, ask them to contact Laura Woodall ( [laurawoodall40@gmail.com](mailto:laurawoodall40@gmail.com) ) or the school office.**

**Visit [PrimaryEthics.com.au](http://PrimaryEthics.com.au) to learn more**



## YOGA & RELAXATION CLASSES – EXPRESS YOUR INTEREST!

In partnership with local small business Well Street, we are keen to offer lunchtime Yoga and Relaxation classes for our students. We are exploring the level of interest in these classes being offered in 2020.

### Class Information

These classes get kids moving, building their fitness, flexibility and co-ordination through age-appropriate yoga. We also introduce them to important breathing exercises to encourage calmness and self regulation, building their ability to deal with stress and anxiety. These techniques are also extremely beneficial for children who battle with sleep.

Overall these classes are a great way to provide kids an avenue for mindfulness practice in school and to promote overall student wellbeing.

### How it works

- Classes would be held during lunchtime, once a week.
- Ages K-6, all welcome!
- Classes would run for four weeks and cost \$10/class – \$40 in total.
- Children would still have time to eat lunch and have a toilet break.
- It's a great way to calm and focus the kids ahead of afternoon learning!

### Express your interest

Would your child be interested in attending lunchtime yoga and relaxation classes?

Express your interest here via the Well Street website - it only takes a minute!

[wellstreet.com.au](http://wellstreet.com.au)



# RUSSELL LEA SCHOOL BAND JOIN THE BAND!

Is your child interested in joining the school band?  
The school band is now taking enrolments  
for 2020 and is open to all students who are currently in  
years 2-5. No prior experience needed!

In Term 4 students will see a demonstration concert at school  
that highlights the different instruments available for tuition. They  
will receive a green school band Expression of Interest note  
providing introductory information.

What do you need to do? Carefully read the introductory information,  
then return the green Expression of Interest form to the school office.

Your child will then be able to try a variety of instruments with trained  
tutors, to help find the instrument to which they are best suited. The  
results of this instrument trial will be sent home with comprehensive  
enrolment information.

Learning an instrument in an ensemble is a great way to experience the  
social, educational and personal benefits that music and the arts have  
to offer! TSA provides a quality instrumental program with full band  
rehearsals, great value tuition and rent-to-buy instrument hire.



For more information on your school's instrumental  
band program, please contact TSA at  
[enrolments@teachingservices.com.au](mailto:enrolments@teachingservices.com.au) or 9651 7333.



## School Band Program

Dear Parents,

Today your child attended a demonstration concert at school showcasing the instruments available for students to learn in 2020. If you would like more information on the school band program, please return the *Expression Of Interest* below within 5 days to your school office.

Students who have returned this form will have the opportunity to meet with a TSA teacher at school to try various instruments. Following the instrument trial, an Enrolment Pack will be sent home with your child. This will contain detailed information about the school band program, along with information about instrument choice and suitability.

Below is a brief outline of the band program. More information can also be found at [www.teachingservices.com.au](http://www.teachingservices.com.au).



### How does the band program work?

Students attend both:

- *Band rehearsal* (all students together in a band) - generally takes place before or after school for 30-60 minutes once a week.
- *Group tuition* (small group or individual lesson) - at school, usually on the same day as rehearsal, and is timetabled with the approval of the school. *Group tuition* has an average of 5 students per group and is encouraged as an easy, social way to begin learning a musical instrument.

Home *practise* is essential, at least 3 or 4 times every week for between 15-20 minutes each practise.

### What are the costs?

Rehearsal & Tuition Fees

- Group lessons + Band rehearsal fee = \$195 per term  
OR
- Private lesson fee \$395 per term + Band rehearsal fee \$95 per term = \$490 per term

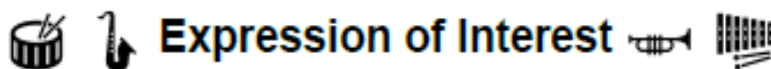
Instrument

- Purchase - expect to pay at least \$600 for a quality new wind/brass instrument
- Hire - TSA runs a rent-to-buy scheme starting at \$43 per month

Other costs include a tutor book (\$20) & music stand (\$25) and TSA resource levy (\$10 per term). Some schools also charge a facility hire levy (\$10-\$30 per term). Some instruments will need items such as cork grease/valve oil (under \$10), or reeds (max \$52)



-----  
Please return this slip to your school office within 5 days to ensure your child is called for instrument testing.



Student Name: \_\_\_\_\_ School \_\_\_\_\_

Names of Parents/Guardians: \_\_\_\_\_ Class (2019) \_\_\_\_\_

Phone: Mobile \_\_\_\_\_ Home \_\_\_\_\_

Email Address: \_\_\_\_\_

*Please print clearly and carefully to help us correctly enter your details – email is our primary method of contact*

Signature: \_\_\_\_\_ Date: / /

Office Use Only:  
Instrument test result \_\_\_\_\_



## Coronavirus

### Update advice for Parents – 2 February 2020

Current advice from the Australian Government Department of Health for parents in regards to the Novel Coronavirus is:

- Any student and staff arriving in Australia *from 1 February 2020* who has been in mainland China or transited through mainland China (not just Hubei province) is excluded from school and child care services for a period of 14 days from the date they left mainland China as the Novel Coronavirus' incubation period can be as long as two weeks.
- Any confirmed case of Novel Coronavirus will be excluded until they are medically cleared to return
- Close contact of a confirmed case of Novel Coronavirus will be excluded for 14 days since last contact with the confirmed case.
- Any student and staff arriving *before 1 February* our previous advice remains that students and staff who were in Hubei province are excluded from school or child care services for 14 days, and those who were in the rest of China are requested not to attend school or child care services for a period of 14 days after leaving China.
- More information can be found at [NSW Health](#).

Students who returned to Australia from mainland China more than 14 days ago and have shown no symptoms are able to return to school.

The Ministry of Health has processes in place to identify any close contacts of cases confirmed in Australia. Advice about not attending school would be provided to these close contacts by the Ministry of Health.

There has been a small number of confirmed cases of novel coronavirus in NSW.

Consistent with current guidelines, staff and students who are unwell with respiratory illness should remain at home until symptoms resolve. In accordance with our current practice if any child becomes unwell we will implement our infection control guidelines and follow the advice provided by the Ministry of Health as appropriate.

The Department of Education will continue to work with the Ministry of Health to monitor and respond to the unfolding international novel coronavirus situation.

## Sydney Buses - Service adjustments from Sunday 9 February

Timetable adjustments will occur on many Inner West bus routes from Sunday 9 February, to support more reliable journeys. There are also minor changes to the timetables of some school services.

Trip planning and further information

Parents and students are encouraged to plan their trip to see if these timetable changes will impact the way that they currently travel to and from school. More information, including timetables, maps, Trip Planning and school service details is available at [transportnsw.info](http://transportnsw.info). You can also view school service information on the Transit Systems website – [transitsystems.com.au](http://transitsystems.com.au) .

Student Opal Card Reminder

Please ensure your students are aware of the condition of use of their Opal Card, and the importance of carrying and using their card whenever they travel.

It is a condition of travel that all students tap on with their Student Opal card every time they board the bus, and tap off when they alight. This allows Transport for NSW and bus operators to assess the patronage of bus services, including School Special buses, to ensure that resources are used efficiently and meet customer demand.

If you have any questions about these service changes, please contact Peter Whitney, Area Manager Business Support Services on (02) 8778 5887.

# AFTER SCHOOL ART PROGRAM

Join in the fun of Art with a variety of workshops exploring a range of activities including painting, printing, sculpture and collage. Through hands on activities, participants will increase their knowledge and understanding of the Visual Arts and gain confidence to express themselves creatively. Learning about artists and artworks all while developing skills, imagination and creative thinking.

## Junior Class Kindy-Year 2

WHEN: Tuesday 3.30pm-6pm

### TERM 1

- Week 1, No Class
- Week 2, No Class
- Week 3, No Class
- Week 4, No Class
- Week 5, No Class
- Week 6, 3rd March
- Week 7, 10th March
- Week 8, 17th March
- Week 9, 24th March
- Week 10, 31st March
- Week 11, 7th April

WHERE: Russell Lea Public School

COST: \$120 full term

(includes afternoon tea and all materials)

Bookings via  
[ebony.postma@gmail.com](mailto:ebony.postma@gmail.com)





# ARTSCAPE

## MORNING SESSION

ARTSCAPE aims to provide a challenging, creative and free space for students to explore their creativity and self-expression. Each week ARTSCAPE will provide a morning of unique artistic experiences that encourage open ended and creative outcomes. This may include experimenting with concepts, techniques and materials and/or contributing ideas to a group project or collaboration.

### Junior Class Kindy-year 3

• WHEN: Tuesday 8-9am

#### TERM 1

- Week 1, No Class
- Week 2, No Class
- Week 3, No Class
- Week 4, No Class
- Week 5, No Class
- Week 6, 3rd March
- Week 7, 10th March
- Week 8, 17th March
- Week 9, 24th March
- Week 10, 31st March
- Week 11, 7th April

WHERE: Russell Lea Public School

COST: \$90 full term

(includes afternoon tea and all materials)

Bookings via  
[ebony.postma@gmail.com](mailto:ebony.postma@gmail.com)





Drummoyne Dirty Reds Juniors is  
kicking off the season launch with the  
inaugural

**DIRTY RED COLOUR RUN!!**

**SAVE THE  
DATE**

**Sunday 16 February 2020**

from 2pm @ Taplin Oval

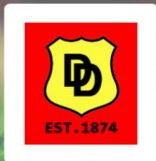
early bird rugby registrations | bbq | bar |

jumping castle | games | loads of fun

all welcome

**DIRTY RED COLOUR RUN START 3.30PM**

more details to come



Home of

**Dirty Reds Junior Rugby!**

Drummoyne Districts Junior Rugby Union Club



**mate with mate, great fun,  
great club!!**

**2020 REGISTRATIONS OPEN**

Players of all ages and all abilities welcome!

Boys and girls u6's - Opens



**follow us on social media or contact us below:**



0414207495



[info@drummoynejuniorrugby.com.au](mailto:info@drummoynejuniorrugby.com.au)



[dirtyredjuniorrugby](https://www.facebook.com/dirtyredjuniorrugby)



[@dirtyredsjuniors](https://www.instagram.com/dirtyredsjuniors)



# BRIARS TRY HOCKEY DAY

**Are you looking for a fun, social, and high energy team sport  
for your family this winter?**

**Hockey is a great way to develop fitness, teamwork  
& confidence, whilst meeting new people!**

Briars is a premier hockey club based in Concord, we offer hockey programs for juniors aged 3 - 17 years, through to seniors who compete in the premier League. The senior teams also include social hockey teams.

Join us at our upcoming Try Hockey Day, which includes an introductory field sessions of hockey with a free sausage sizzle & ice blocks afterwards.

Come & see our facilities and meet the 2020 Briars Hockey committee and coaches.

**10 am - 10:30 am:**

**Meet & chat with coaches, committee and current players**

**10:30 am - 11:30 am:**

**Introductory training session, catering for pre-school age to U17's**

**11:30 am - 12:30 pm:**

**BBQ & ice blocks**

For more information please contact  
Nicola Skinner | E: [secretary@briarshockey.com.au](mailto:secretary@briarshockey.com.au) | M: 0419 907 297

**WHEN**

**SATURDAY, 15TH FEBRUARY 2020  
10 AM - 12.30 PM**

**WHERE**

**CINTRA HOCKEY FIELD  
GIPPS STREET CONCORD**  
(nearest cross street is Loftus Street)



[WWW.BRIARSSPORTS.COM.AU](http://WWW.BRIARSSPORTS.COM.AU)